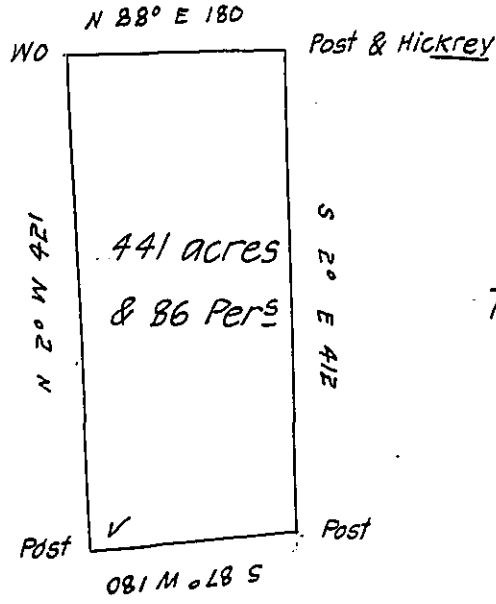


Thomas Swearingen

Peter Gaskill

Thomas Reynolds



Donation Land

The above is a draught of a survey made the 13<sup>th</sup> day of May 1795 in pursuance of a warrant granted Joseph Redman Jun<sup>r</sup> dated the 14<sup>th</sup> day of Aprile 1792 situated on the waters of Beaver Creek Alleghany County called Morefield Containing 441 acres & 86 perches & allowance of six per cent &c

Thomas Stokely D.S

Daniel Brodhead Esq<sup>r</sup>

Surveyor Gen<sup>l</sup> of Penn<sup>a</sup>

IN TESTIMONY that the above is a copy of the original remaining on file in the Department of Internal Affairs of Pennsylvania, made conformably to an Act of Assembly approved the 16th day of February, 1833, I have hereunto set my Hand and caused the Seal of said Department to be affixed at Harrisburg, this ninth day of April 1907.

*George D. Brown*  
 Secretary of Internal Affairs.